

FIRE SAFETY INSPECTION REPORT

FASHION EXPOSURE

ELIAS TOWER, 4 HARUNABAD, PALLABI, MIRPUR-12

OTHER FACTORIES: NONE



ACCORD
on Fire and Building Safety in Bangladesh

April 19, 2014

SUMMARY

Fashion Exposure was surveyed for fire safety on 4/19/2014 by Hughes Associates, Inc. This summary identifies the major deficiencies that were identified during the inspection.

The purpose of this survey was to identify significant fire safety issues and to provide recommendations for remediation based on applicable standards specified by the Accord. The scope of this initial fire safety inspection was limited to the review and identification of major fire safety issues. The inspection did not include identification of minor deficiencies, which will be further addressed as part of follow-up inspections.

Table 1 summarizes the major fire safety issues identified during the inspection. Recommendations have been provided to address each issue.

An implementation schedule shall be developed by the factory to remediate each of the findings. The specific timing of improvements, including any requested extensions due to design / installation constraints, shall be submitted to the Accord for approval.

Table 1. Findings And Recommendations

No.	Category	Finding	Recommendation	Remediation Timeframe
F-1	Fire Rated Construction	Central and East exit stairs are not separated from the factory floor.	<p>Provide minimum 1.5-hr fire rated doors and seal all unprotected openings to separate the exit stairs from work areas and other building spaces on all floor levels. Ensure that the fire doors are self-closing and positive latching and that they are provided with fire exit (panic) hardware where serving production floors.</p> <p>If fire doors are required to be held open for functional reasons, provide automatic-closing devices tied to the fire alarm system.</p>	Within 3 months



Fashion Exposure

F-2	Fire Rated Construction	The boiler room and the transformer room are not separated by fire-rated construction.	Separate the service rooms by a minimum 2-hr fire-rated construction. Seal and/or protected all openings to maintain the required fire separations	Within 3 months
-----	-------------------------	--	--	-----------------



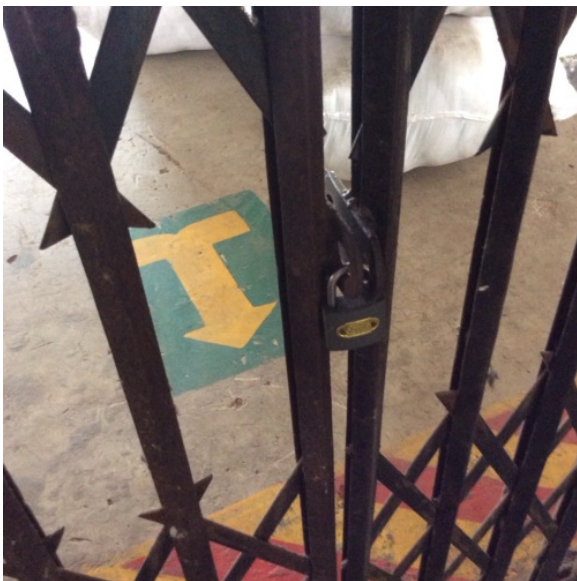
F-3	Fire Rated Construction	Unsealed penetrations and openings are located in West exit stair enclosures.	Seal all penetrations and openings in exit stair enclosure walls to maintain the fire separation.	Within 3 months
-----	-------------------------	---	---	-----------------



F-4	Egress	Storage was located in the main stair at the ground floor.	Remove all storage from exit stairs and egress paths.	Immediate
-----	--------	--	---	-----------



F-5	Egress	Egress doors and gates with locking features are provided at the discharge of both stairs.	Remove locking features from all egress doors and gates. If locks are required for security reasons, utilize special door locking features complying with NFPA 101.	Immediate
-----	--------	--	---	-----------



Fashion Exposure

F-6	Egress	Sliding doors are provided throughout main stairwell.	Replace all gates and sliding doors along the means of egress with side-hinged, swinging egress doors. If locks are required for security reasons, utilize special door locking features complying with NFPA 101.	Within 1 month
-----	--------	---	--	----------------



F-7	Egress	The egress path on Floor 2 was through a storage room.	Provide 2-hr fire-rated exit passageway through storeroom, or reconfigure exit discharge path to not pass through storeroom.	Within 3 months
-----	--------	--	--	-----------------



F-8	Fire Protection	The fire alarm system is antiquated, not a listed system, and does not provide alarm and notification features consistent with acceptable standards.	Replace the fire alarm system with a new, listed addressable fire alarm system in accordance with NFPA 72.	Design within 4 months, install within 9 months
-----	-----------------	--	--	---



F-9	Fire Protection	The high-rise building has an occupied floor greater than 23m (75 ft) and is not provided with automatic sprinkler protection. The large occupant loads, heavy fuel loading, and anticipated extended egress times warrant sprinkler protection.	Provide automatic sprinkler protection throughout the building in accordance with NFPA 13.	Design within 6 months, install within 12 months
F-10	Fire Protection	Inspection, testing, and maintenance for the fire alarm system it was not in accordance with NFPA 72.	Inspect, test and maintain the fire alarm system, and keep written records on-site, in accordance with NFPA 72.	Within 3 months



F-11	Fire Protection	The building is equipped with single-station smoke alarms. Smoke alarm activation sounds only a local alarm and does not provide automatic fire alarm notification of occupants.	Remove single-station smoke alarms. Provide automatic smoke detection throughout the building in accordance with NFPA 72.	Within 6 months
------	-----------------	--	---	-----------------



F-12	Egress Lighting	Manual on-off switch is provided for exit signage units in the generator room.	Remove manual on/off switches from exit signage units to prevent them from being switched off.	Within 1 month
F-13	Egress Lighting	Inspection, testing, and maintenance records for the emergency lighting system were not available.	Inspect, test and maintain the emergency lighting system in accordance with The ACCORD standard. Keep written records on-site.	Within 3 months